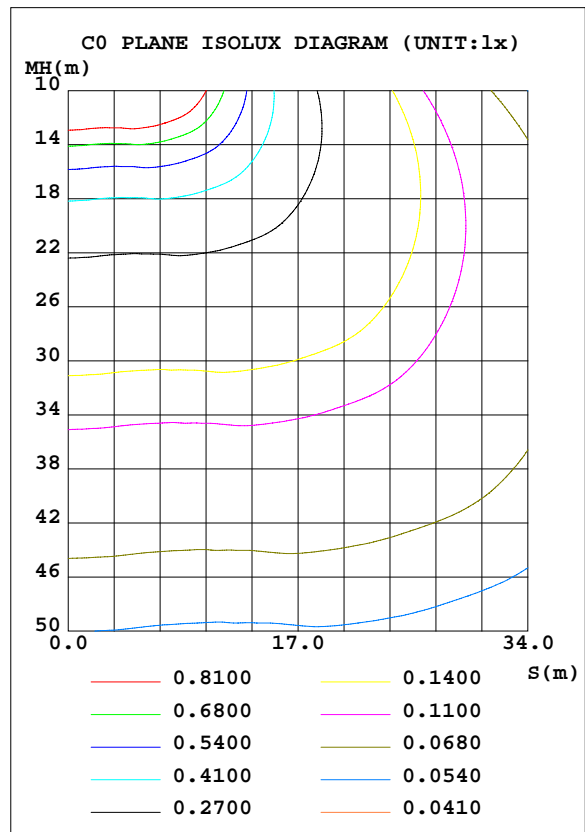
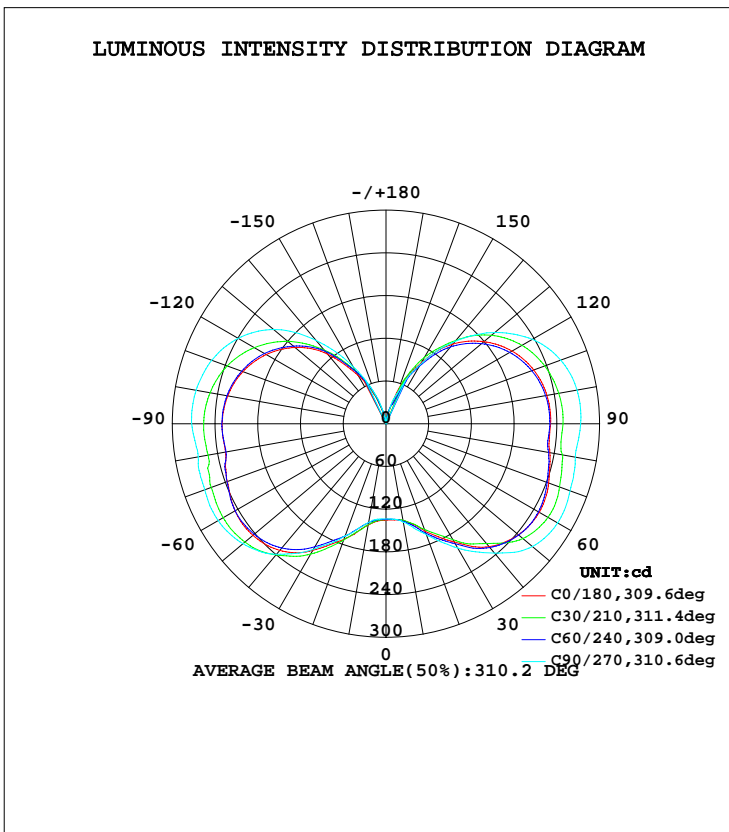


LUMINAIRE PHOTOMETRIC TEST REPORT

Test:U:277.3V I:0.0829A P:21.33W PF:0.9280 Lamp Flux:2567.22x1 lm		
NAME: LED lamp	TYPE:LED	WEIGHT:0.3
SPEC.:E26/E27	DIM.: /	SERIAL No.:20#
MFR.: SHENZHEN IDO LIGHTING CO.,LTD	SUR.:	Shielding Angle:

DATA OF LAMP		PHOTOMETRIC DATA Eff: 120.38 lm/W			
MODEL	IDO-801-22W-S	Imax(cd)	278.6	S/MH(C0/180)	2.33
NOMINAL POWER(W)	22	LOR(%)	100.0	S/MH(C90/270)	2.44
RATED VOLTAGE(V)	100-277	TOTAL FLUX(lm)	2567.2	η UP, DN(C0-180)	21.9,28.2
NOMINAL FLUX(lm)	2567.22	CIE CLASS	DIFFUSE	η UP, DN(C180-360)	21.8,28.1
LAMPS INSIDE	1	η up(%)	43.7	CIBSE SHR NOM	2.00
TEST VOLTAGE(V)	/	η down(%)	56.3	CIBSE SHR MAX	0.00



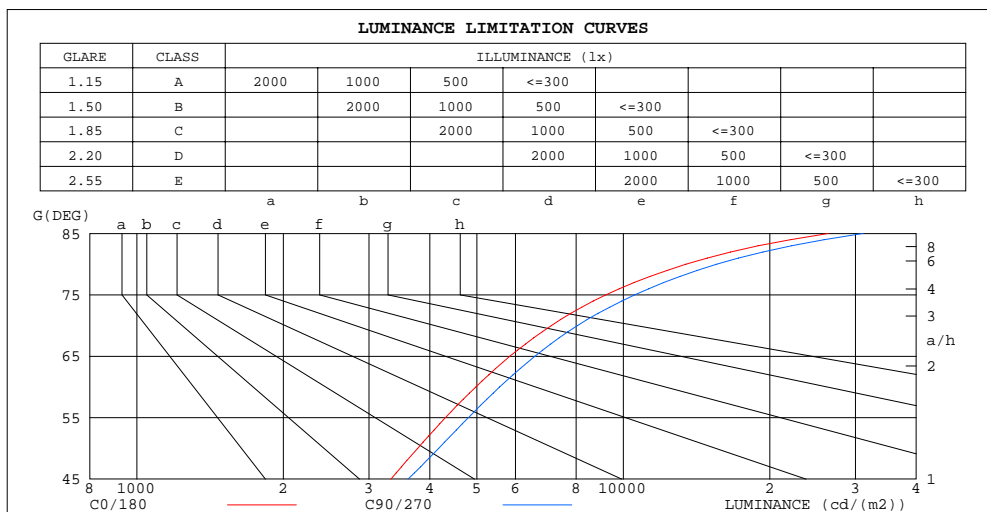
C Range: 0 - 360DEG
 C Interval: 10.0DEG
 Test Speed: HIGH
 Temperature: 24.6DEG
 Operators:Alvin Zhang
 Test Date:2015-02-03

γ Range: 0 - 180DEG
 γ Interval: 1.0DEG
 Test System:EVERFINE GO-R5000_V2 SYSTEM V2.0.294
 Humidity: 45.4%
 Test Distance:2.462m [K=1.0000]
 Remarks:

**ZONAL FLUX DIAGRAM
AND LUMINANCE LIMITATION CURVES**

ZONAL FLUX DIAGRAM:

γ	C0	C45	C90	C135	C180	C225	C270	C315	γ	Φ zone	Φ total	ℓlum,lamp
10	138.2	138.1	140.4	143.5	144.5	142.4	140.6	136.9	0- 10	13.04	13.04	0.51,0.51
20	160.5	160.7	165.7	173.7	172.7	169.6	167.7	161.7	10- 20	43.37	56.41	2.2,2.2
30	191.7	191.1	201.6	207.6	205.2	202.5	203.7	194.2	20- 30	84.62	141.0	5.49,5.49
40	225.3	221.4	237.2	234.1	232.2	231.3	239.4	226.2	30- 40	135.2	276.3	10.8,10.8
50	242.7	239.5	268.2	245.8	243.9	250.1	262.2	244.2	40- 50	184.9	461.1	18,18
60	248.8	245.4	278.4	247.2	244.7	254.7	272.1	250.9	50- 60	223.8	684.9	26.7,26.7
70	243.2	239.9	275.1	239.6	237.2	249.1	270.9	246.0	60- 70	246.8	931.7	36.3,36.3
80	233.5	232.5	270.1	230.7	228.7	238.6	267.8	236.7	70- 80	255.2	1187	46.2,46.2
90	231.2	230.9	273.4	231.7	230.0	239.2	273.0	236.4	80- 90	258.0	1445	56.3,56.3
100	229.5	229.0	272.5	227.8	225.6	233.2	270.8	235.0	90-100	257.8	1703	66.3,66.3
110	220.9	219.3	261.3	216.2	214.0	220.0	260.4	226.1	100-110	242.9	1946	75.8,75.8
120	204.3	201.7	237.3	197.3	194.4	199.4	239.8	208.3	110-120	213.5	2159	84.1,84.1
130	179.6	175.3	199.6	170.2	166.8	169.9	206.0	181.5	120-130	172.2	2331	90.8,90.8
140	146.1	138.7	151.1	132.9	127.9	129.7	152.9	147.1	130-140	123.6	2455	95.6,95.6
150	98.48	92.99	95.79	83.53	78.84	82.42	93.07	100.8	140-150	72.92	2528	98.5,98.5
160	51.74	36.62	44.73	40.79	35.94	38.43	42.81	54.81	150-160	31.88	2560	99.7,99.7
170	10.55	12.79	9.845	6.707	5.297	6.477	8.996	11.13	160-170	7.101	2567	100,100
180	0	0	0	0	0	0	0	0	170-180	0.3758	2567	100,100
DEG	LUMINOUS INTENSITY:cd									UNIT:lm		



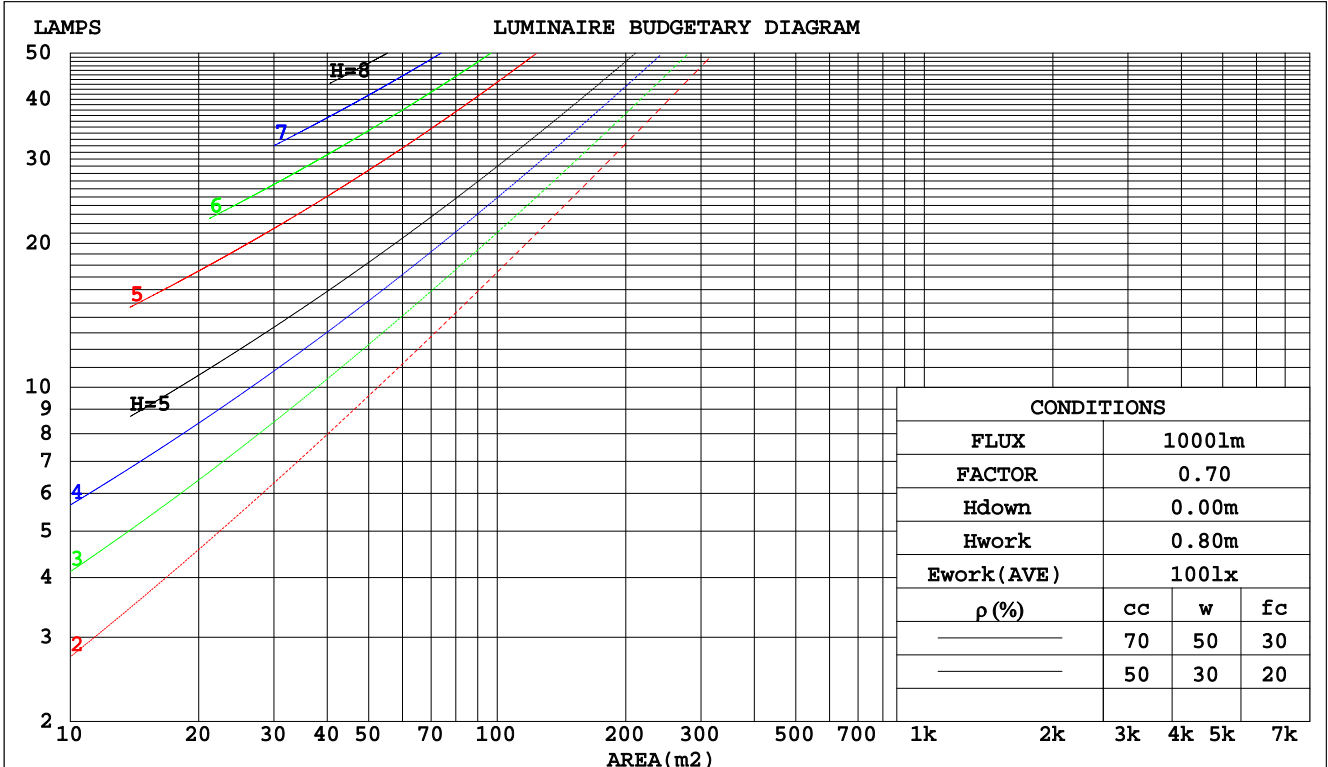
C Range: 0 - 360DEG
 C Interval: 10.0DEG
 Test Speed: HIGH
 Temperature: 24.6DEG
 Operators: Alvin Zhang
 Test Date: 2015-02-03

γ Range: 0 - 180DEG
 γ Interval: 1.0DEG
 Test System: EVERFINE GO-R5000_V2 SYSTEM V2.0.294
 Humidity: 45.4%
 Test Distance: 2.462m [K=1.0000]
 Remarks:

CU AND LUMINAIRE BUDGETARY ESTIMATE DIAGRAM

Test:U:277.3V I:0.0829A P:21.33W PF:0.9280 Lamp Flux:2567.22x1 lm		
NAME: LED lamp	TYPE:LED	WEIGHT:0.3
SPEC.:E26/E27	DIM.: /	SERIAL No.:20#
MFR.: SHENZHEN IDO LIGHTING CO.,LTD	SUR.:	Shielding Angle:

pcc	80%			70%			50%			30%			10%			0
pw	50%	30%	10%	50%	30%	10%	50%	30%	10%	50%	30%	10%	50%	30%	10%	0
pfc	20%			20%			20%			20%			20%			0
RCR	RCR:Room Cavity Ratio						Coefficients of Utilization(CU)									
0.0	1.09	1.09	1.09	1.01	1.01	1.01	.87	.87	.87	.74	.74	.74	.62	.62	.62	.56
1.0	.88	.82	.76	.81	.76	.71	.69	.65	.61	.57	.54	.51	.47	.44	.42	.37
2.0	.74	.65	.58	.68	.61	.54	.57	.51	.46	.47	.43	.39	.38	.35	.32	.27
3.0	.63	.54	.46	.58	.50	.43	.49	.42	.37	.40	.35	.31	.32	.28	.25	.21
4.0	.55	.45	.38	.50	.42	.35	.42	.35	.30	.35	.29	.25	.28	.24	.20	.16
5.0	.48	.38	.31	.44	.36	.29	.37	.30	.25	.31	.25	.21	.24	.20	.17	.13
6.0	.43	.33	.26	.39	.31	.25	.33	.26	.21	.27	.22	.17	.22	.17	.14	.11
7.0	.38	.29	.23	.35	.27	.21	.30	.23	.18	.25	.19	.15	.20	.15	.12	.09
8.0	.34	.26	.20	.32	.24	.18	.27	.20	.16	.22	.17	.13	.18	.14	.10	.08
9.0	.31	.23	.17	.29	.21	.16	.24	.18	.14	.20	.15	.11	.16	.12	.09	.07
10.0	.28	.20	.15	.26	.19	.14	.22	.16	.12	.19	.14	.10	.15	.11	.08	.06



C Range: 0 - 360DEG
 C Interval: 10.0DEG
 Test Speed: HIGH
 Temperature: 24.6DEG
 Operators: Alvin Zhang
 Test Date: 2015-02-03

γ Range: 0 - 180DEG
 γ Interval: 1.0DEG
 Test System: EVERFINE GO-R5000_V2 SYSTEM V2.0.294
 Humidity: 45.4%
 Test Distance: 2.462m [K=1.0000]
 Remarks:

WEC AND CCEC

Test:U:277.3V I:0.0829A P:21.33W PF:0.9280 Lamp Flux:2567.22x1 lm		
NAME: LED lamp	TYPE:LED	WEIGHT:0.3
SPEC.:E26/E27	DIM.: /	SERIAL No.:20#
MFR.: SHENZHEN IDO LIGHTING CO.,LTD	SUR.:	Shielding Angle:

ρcc	80%			70%			50%			30%			10%			0
ρw	50%	30%	10%	50%	30%	10%	50%	30%	10%	50%	30%	10%	50%	30%	10%	0
ρfc	20%			20%			20%			20%			20%			0
RCR	RCR:Room Cavity Ratio						Wall Exitance Coefficients(WEC)									
0.0																
1.0	.421	.240	.076	.401	.229	.073	.362	.208	.066	.327	.188	.060	.294	.170	.055	
2.0	.352	.193	.059	.333	.183	.056	.298	.165	.051	.265	.149	.047	.235	.133	.042	
3.0	.306	.163	.049	.289	.155	.047	.257	.139	.042	.227	.125	.038	.200	.111	.034	
4.0	.272	.142	.042	.257	.134	.040	.227	.121	.036	.200	.107	.032	.174	.095	.029	
5.0	.246	.125	.036	.231	.119	.035	.204	.106	.031	.179	.094	.028	.155	.083	.025	
6.0	.224	.112	.032	.210	.106	.031	.185	.095	.028	.162	.084	.025	.140	.074	.022	
7.0	.205	.101	.029	.193	.096	.027	.170	.086	.025	.148	.076	.022	.128	.067	.020	
8.0	.189	.093	.026	.178	.088	.025	.157	.078	.022	.137	.069	.020	.118	.061	.018	
9.0	.176	.085	.024	.166	.081	.023	.146	.072	.020	.127	.064	.018	.109	.055	.016	
10.0	.164	.079	.022	.155	.075	.021	.136	.067	.019	.118	.059	.017	.102	.051	.015	

ρcc	80%			70%			50%			30%			10%			0
ρw	50%	30%	10%	50%	30%	10%	50%	30%	10%	50%	30%	10%	50%	30%	10%	0
ρfc	20%			20%			20%			20%			20%			0
RCR	RCR:Room Cavity Ratio						Ceiling Cavity Exitance Coefficients(CCEC)									
0.0	.524	.524	.524	.447	.447	.447	.305	.305	.305	.175	.175	.175	.056	.056	.056	
1.0	.524	.491	.461	.448	.421	.397	.307	.290	.275	.176	.168	.160	.057	.054	.052	
2.0	.518	.470	.429	.444	.404	.371	.304	.280	.259	.175	.163	.152	.056	.053	.049	
3.0	.511	.454	.409	.438	.392	.355	.301	.272	.249	.174	.159	.147	.056	.052	.048	
4.0	.504	.443	.396	.432	.383	.344	.297	.267	.242	.172	.156	.143	.055	.051	.047	
5.0	.497	.434	.388	.426	.375	.337	.294	.262	.238	.170	.154	.141	.055	.050	.047	
6.0	.489	.426	.381	.421	.369	.332	.290	.259	.235	.168	.152	.140	.054	.050	.046	
7.0	.482	.420	.377	.415	.364	.328	.287	.255	.233	.167	.150	.138	.054	.049	.046	
8.0	.476	.415	.373	.409	.360	.326	.283	.253	.231	.165	.149	.138	.053	.049	.046	
9.0	.469	.411	.371	.404	.356	.323	.280	.250	.230	.163	.148	.137	.053	.049	.045	
10.0	.464	.407	.369	.400	.353	.322	.277	.248	.229	.162	.147	.136	.052	.048	.045	

C Range: 0 - 360DEG
 C Interval: 10.0DEG
 Test Speed: HIGH
 Temperature: 24.6DEG
 Operators:Alvin Zhang
 Test Date:2015-02-03

γ Range: 0 - 180DEG
 γ Interval: 1.0DEG
 Test System:EVERFINE GO-R5000_V2 SYSTEM V2.0.294
 Humidity: 45.4%
 Test Distance:2.462m [K=1.0000]
 Remarks:

UGR(Unified Glare Rating) Table

Test:U:277.3V I:0.0829A P:21.33W PF:0.9280 Lamp Flux:2567.22x1 lm										
NAME: LED lamp					TYPE:LED			WEIGHT:0.3		
SPEC.:E26/E27					DIM.: /			SERIAL No.:20#		
MFR.: SHENZHEN IDO LIGHTING CO.,LTD					SUR.:			Shielding Angle:		
ceiling/cavity	0.7	0.7	0.5	0.5	0.3	0.7	0.7	0.5	0.5	0.3
walls	0.5	0.3	0.5	0.3	0.3	0.5	0.3	0.5	0.3	0.3
working plane	0.2	0.2	0.2	0.2	0.2	0.2	0.2	0.2	0.2	0.2
Room dimensions	Viewed crosswise					Viewed endwise				
x = 2H y = 2H	15.6	16.8	16.4	17.6	18.7	15.5	16.7	16.3	17.5	18.5
3H	18.7	19.8	19.5	20.6	21.7	18.7	19.7	19.5	20.6	21.7
4H	20.4	21.4	21.2	22.3	23.4	20.4	21.4	21.3	22.3	23.4
6H	22.3	23.2	23.1	24.1	25.2	22.5	23.4	23.3	24.3	25.4
8H	23.3	24.2	24.2	25.1	26.2	23.6	24.6	24.5	25.4	26.6
12H	24.5	25.4	25.4	26.3	27.4	25.0	25.9	25.9	26.8	27.9
4H 2H	16.5	17.5	17.4	18.4	19.5	16.4	17.4	17.3	18.3	19.4
3H	19.8	20.7	20.7	21.6	22.8	19.7	20.5	20.5	21.4	22.6
4H	21.7	22.5	22.6	23.4	24.6	21.6	22.4	22.5	23.3	24.5
6H	23.8	24.5	24.7	25.4	26.6	23.7	24.4	24.6	25.4	26.6
8H	24.9	25.5	25.8	26.5	27.7	24.9	25.6	25.8	26.5	27.7
12H	26.2	26.8	27.1	27.7	29.0	26.4	27.0	27.3	27.9	29.2
8H 4H	22.3	23.0	23.3	24.0	25.2	22.2	22.9	23.2	23.8	25.1
6H	24.7	25.3	25.7	26.3	27.5	24.6	25.2	25.5	26.1	27.4
8H	26.1	26.6	27.0	27.6	28.8	26.0	26.5	26.9	27.5	28.7
12H	27.6	28.1	28.6	29.0	30.3	27.6	28.0	28.6	29.0	30.3
12H 4H	22.5	23.1	23.4	24.1	25.3	22.4	23.1	23.4	24.0	25.2
6H	25.0	25.5	26.0	26.5	27.7	24.9	25.4	25.9	26.4	27.6
8H	26.5	26.9	27.4	27.9	29.2	26.4	26.8	27.3	27.8	29.1
Variations with the observer position at spacings:										
S = 1.0H	+ 0.1 / - 0.1					+ 0.1 / - 0.1				
1.5H	+ 0.2 / - 0.3					+ 0.2 / - 0.2				
2.0H	+ 0.3 / - 0.4					+ 0.3 / - 0.3				

CIE Pub.117 Corrected 2567 lm Total Lamp Luminous Flux.(8log(F/F0) = 3.3)

C Range: 0 - 360DEG
 C Interval: 10.0DEG
 Test Speed: HIGH
 Temperature: 24.6DEG
 Operators:Alvin Zhang
 Test Date:2015-02-03

γ Range: 0 - 180DEG
 γ Interval: 1.0DEG
 Test System:EVERFINE GO-R5000_V2 SYSTEM V2.0.294
 Humidity: 45.4%
 Test Distance:2.462m [K=1.0000]
 Remarks:

UTILIZATION FACTORS TABLE

Test:U:277.3V I:0.0829A P:21.33W PF:0.9280 Lamp Flux:2567.22x1 lm		
NAME: LED lamp	TYPE:LED	WEIGHT:0.3
SPEC.:E26/E27	DIM.: /	SERIAL No.:20#
MFR.: SHENZHEN IDO LIGHTING CO.,LTD	SUR.:	Shielding Angle:

REFLECTANCE										
Ceiling	0.8	0.8	0.8	0.7	0.7	0.7	0.5	0.5	0.5	0
Walls	0.7	0.5	0.3	0.7	0.5	0.3	0.7	0.5	0.3	0
Working plane	0.2	0.2	0.2	0.2	0.2	0.2	0.2	0.2	0.2	0
ROOM INDEX	UTILIZATION FACTORS(PERCENT) $k(RI) \times RCR = 5$									
k = 0.60	36	23	16	35	23	16	32	21	15	7
0.80	45	31	22	43	30	22	38	27	20	11
1.00	52	38	29	49	36	28	44	35	25	14
1.25	59	45	35	56	43	34	49	38	31	18
1.50	65	51	41	60	48	39	53	42	35	20
2.00	73	59	50	68	56	47	59	49	42	25
2.50	78	65	56	72	61	53	62	54	47	28
3.00	82	71	62	76	66	58	65	58	51	31
4.00	87	77	69	81	72	65	70	63	57	35
5.00	91	82	75	84	77	70	72	66	61	38
ROOM INDEX	UF(total)									Direct
According to DIN EN 13032-2 2004			Suspended				SHRNOM = 1.25			

C Range: 0 - 360DEG
 C Interval: 10.0DEG
 Test Speed: HIGH
 Temperature: 24.6DEG
 Operators:Alvin Zhang
 Test Date:2015-02-03

γ Range: 0 - 180DEG
 γ Interval: 1.0DEG
 Test System:EVERFINE GO-R5000_V2 SYSTEM V2.0.294
 Humidity: 45.4%
 Test Distance:2.462m [K=1.0000]
 Remarks:

ISOCANDELA DIAGRAM

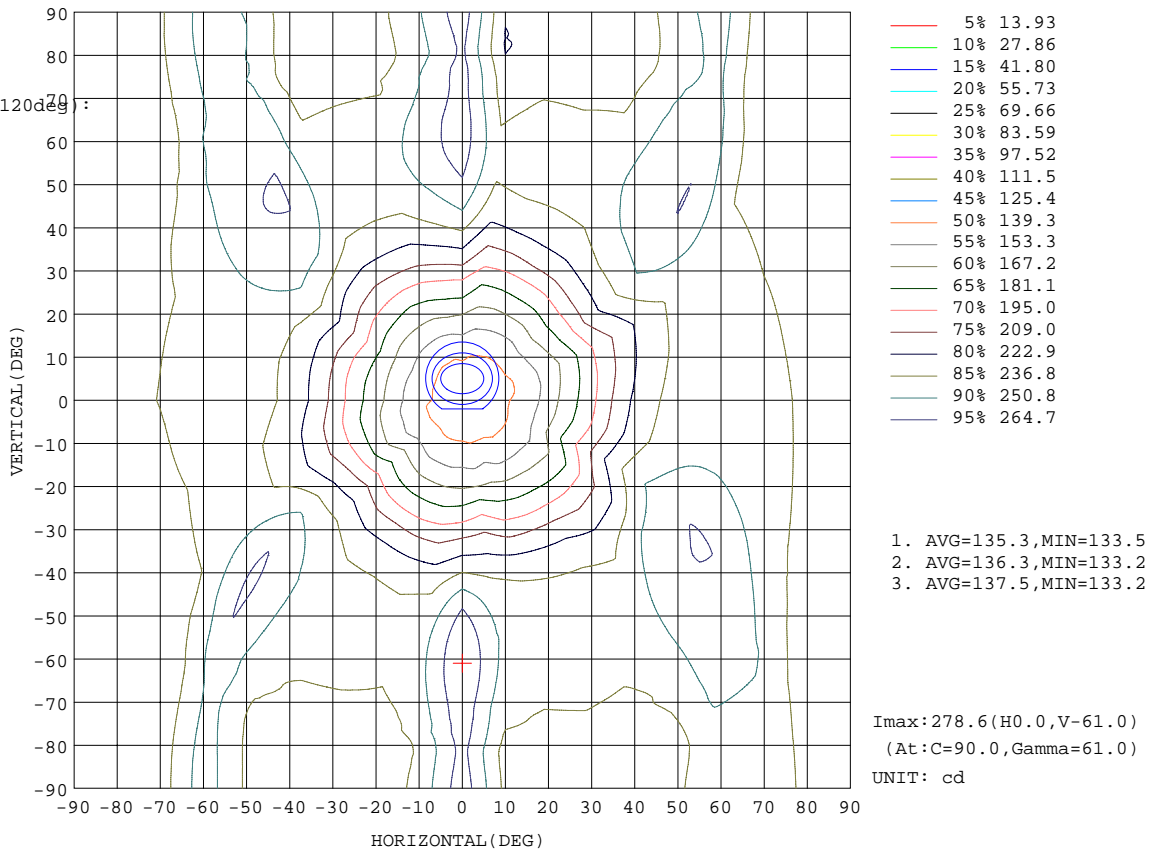
Test:U:277.3V I:0.0829A P:21.33W PF:0.9280 Lamp Flux:2567.22x1 lm		
NAME: LED lamp	TYPE:LED	WEIGHT:0.3
SPEC.:E26/E27	DIM.: /	SERIAL No.:20#
MFR.: SHENZHEN IDO LIGHTING CO.,LTD	SUR.:	Shielding Angle:

Conical surface Flux(90deg):

363.01 lm
%lum = 14.1%
%lamp = 14.1%

Conical surface Flux(120deg):

684.93 lm
%lum = 26.7%
%lamp = 26.7%

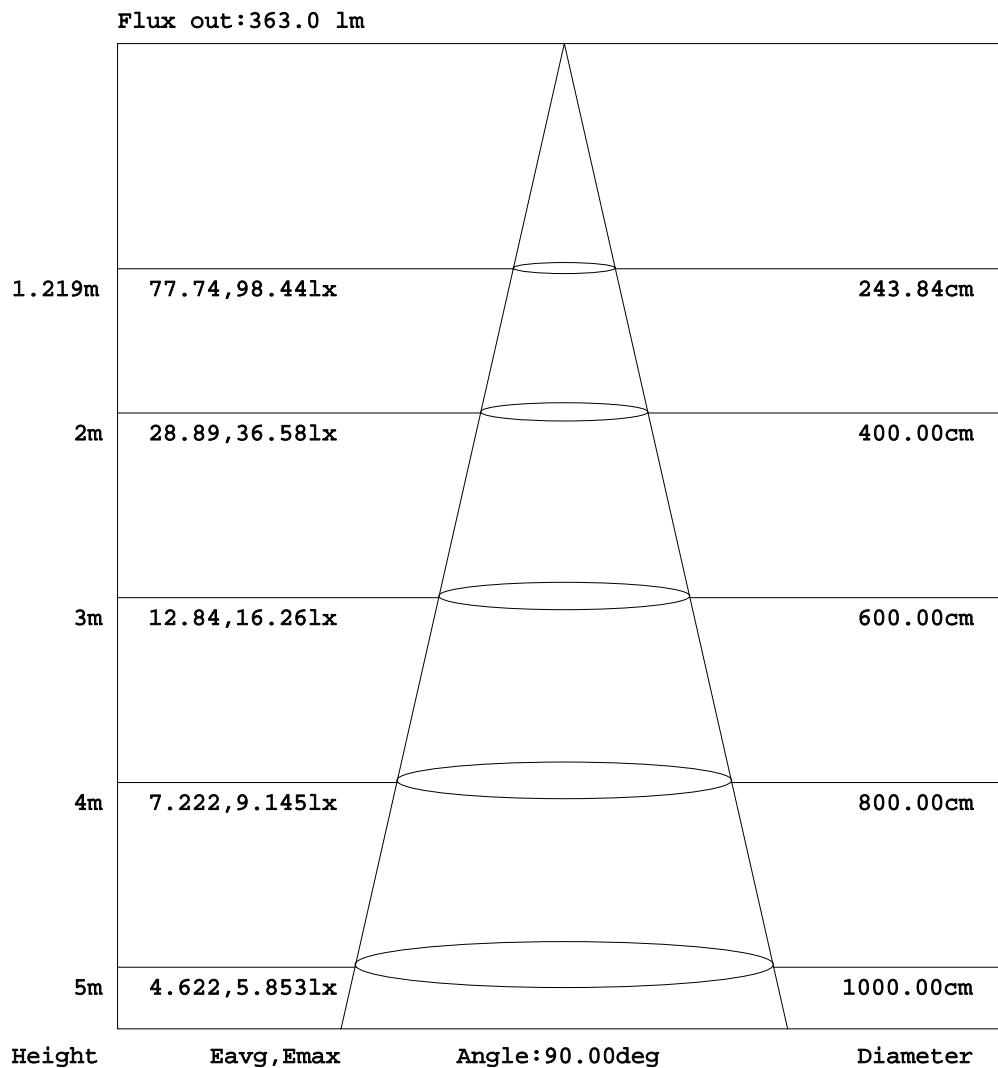


C Range: 0 - 360DEG
C Interval: 10.0DEG
Test Speed: HIGH
Temperature: 24.6DEG
Operators: Alvin Zhang
Test Date: 2015-02-03

γ Range: 0 - 180DEG
γ Interval: 1.0DEG
Test System: EVERFINE GO-R5000_V2 SYSTEM V2.0.294
Humidity: 45.4%
Test Distance: 2.462m [K=1.0000]
Remarks:

AAI Figure

Test:U:277.3V I:0.0829A P:21.33W PF:0.9280 Lamp Flux:2567.22x1 lm		
NAME: LED lamp	TYPE:LED	WEIGHT:0.3
SPEC.:E26/E27	DIM.: /	SERIAL No.:20#
MFR.: SHENZHEN IDO LIGHTING CO.,LTD	SUR.:	Shielding Angle:



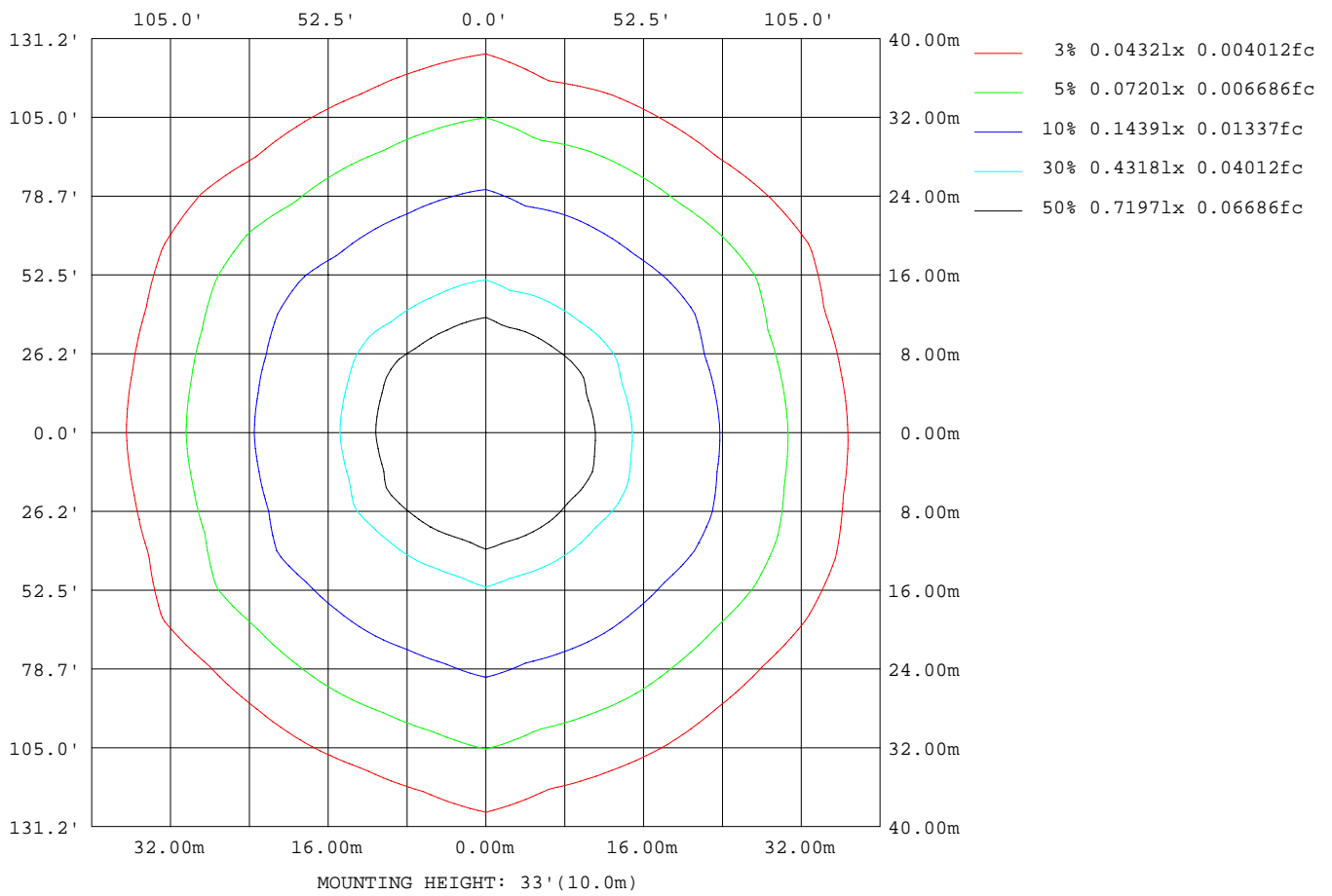
Note:The Curves indicate the illuminated area and the average illumination when the luminaire is at different distance.

C Range: 0 - 360DEG
 C Interval: 10.0DEG
 Test Speed: HIGH
 Temperature: 24.6DEG
 Operators:Alvin Zhang
 Test Date:2015-02-03

γ Range: 0 - 180DEG
 γ Interval: 1.0DEG
 Test System:EVERFINE GO-R5000_V2 SYSTEM V2.0.294
 Humidity: 45.4%
 Test Distance:2.462m [K=1.0000]
 Remarks:

ISOLUX DIAGRAM

Test:U:277.3V I:0.0829A P:21.33W PF:0.9280 Lamp Flux:2567.22x1 lm		
NAME: LED lamp	TYPE:LED	WEIGHT:0.3
SPEC.:E26/E27	DIM.: /	SERIAL No.:20#
MFR.: SHENZHEN IDO LIGHTING CO.,LTD	SUR.:	Shielding Angle:



C Range: 0 - 360DEG
 C Interval: 10.0DEG
 Test Speed: HIGH
 Temperature: 24.6DEG
 Operators: Alvin Zhang
 Test Date: 2015-02-03

γ Range: 0 - 180DEG
 γ Interval: 1.0DEG
 Test System: EVERFINE GO-R5000_V2 SYSTEM V2.0.294
 Humidity: 45.4%
 Test Distance: 2.462m [K=1.0000]
 Remarks:

LED Avg.L Report

Test:U:277.3V I:0.0829A P:21.33W PF:0.9280 Lamp Flux:2567.22x1 lm		
NAME: LED lamp	TYPE:LED	WEIGHT:0.3
SPEC.:E26/E27	DIM.: /	SERIAL No.:20#
MFR.: SHENZHEN IDO LIGHTING CO.,LTD	SUR.:	Shielding Angle:

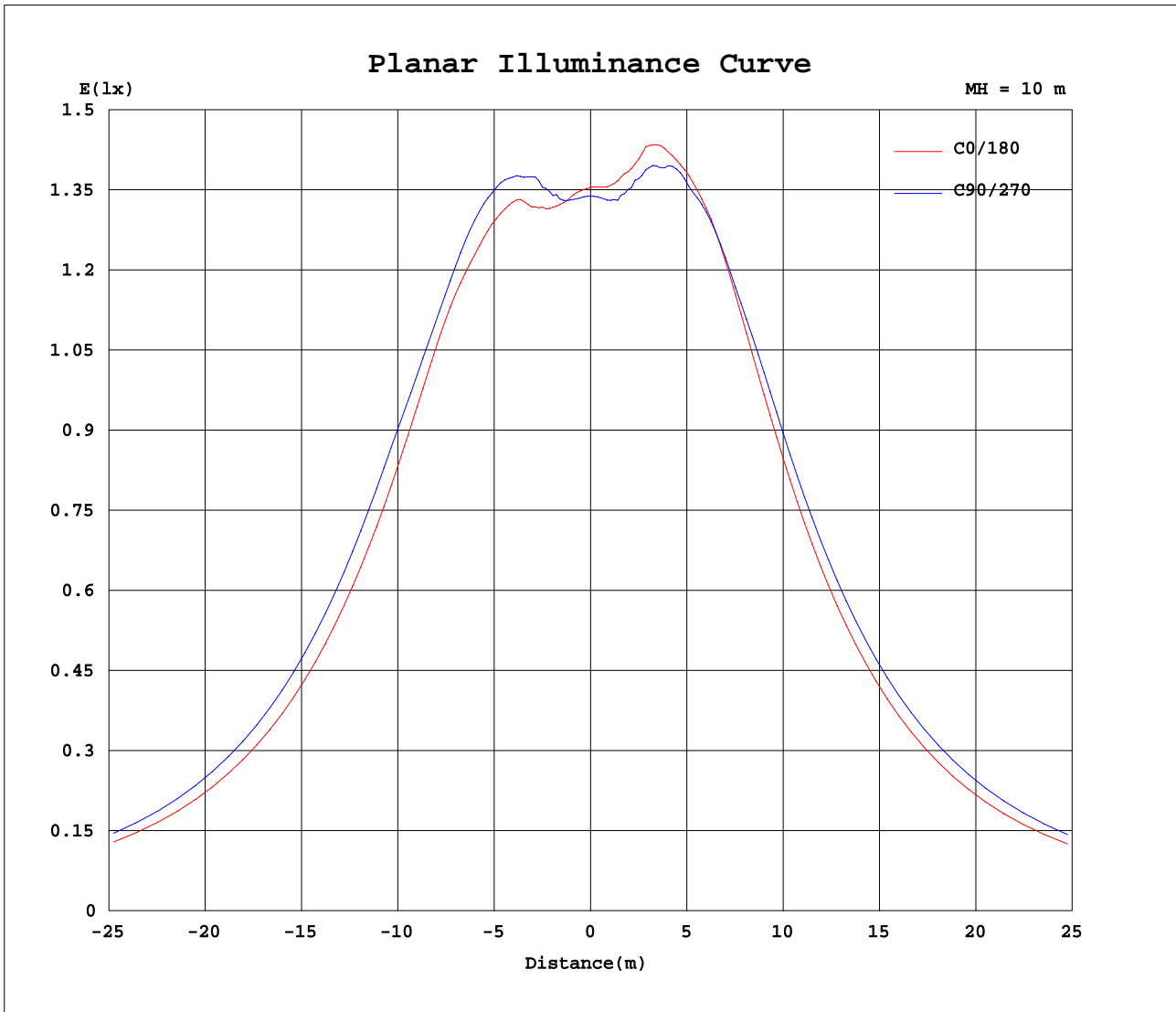
AvgL	cd/m2
L_0~180(65)av	5777
L_0~180(75)av	9108
L_0~180(85)av	26377
L_90~270(65)av	6518
L_90~270(75)av	10498
L_90~270(85)av	30996
L_45(65)av	5839
L_45(75)av	9224
L_45(85)av	26702

Standard: GB/T 29293-2012

C Range: 0 - 360DEG
 C Interval: 10.0DEG
 Test Speed: HIGH
 Temperature: 24.6DEG
 Operators:Alvin Zhang
 Test Date:2015-02-03

γ Range: 0 - 180DEG
 γ Interval: 1.0DEG
 Test System:EVERFINE GO-R5000_V2 SYSTEM V2.0.294
 Humidity: 45.4%
 Test Distance:2.462m [K=1.0000]
 Remarks:

Planar Illuminance Curve



C Range: 0 - 360DEG
C Interval: 10.0DEG
Test Speed: HIGH
Temperature: 24.6DEG
Operators: Alvin Zhang
Test Date: 2015-02-03

γ Range: 0 - 180DEG
 γ Interval: 1.0DEG
Test System: EVERFINE GO-R5000_V2 SYSTEM V2.0.294
Humidity: 45.4%
Test Distance: 2.462m [K=1.0000]
Remarks:

LUMINOUS DISTRIBUTION INTENSITY DATA

Test:U:277.3V I:0.0829A P:21.33W PF:0.9280 Lamp Flux:2567.22x1 lm		
NAME: LED lamp	TYPE:LED	WEIGHT:0.3
SPEC.:E26/E27	DIM.: /	SERIAL No.:20#
MFR.: SHENZHEN IDO LIGHTING CO.,LTD	SUR.:	Shielding Angle:

Table--1

UNIT: cd

C(DEG) γ (DEG)	0	10	20	30	40	50	60	70	80	90	100	110	120	130	140	150	160	170	180
0	135	135	135	135	135	134	134	134	134	134	134	134	134	134	133	133	133	133	135
5	136	135	135	135	135	135	135	135	135	135	135	135	135	135	135	135	135	135	137
10	138	138	138	138	138	138	139	139	139	140	140	141	142	144	143	142	142	142	145
15	146	148	147	145	146	147	148	153	149	152	151	152	152	156	159	153	155	155	157
20	161	163	165	158	160	162	164	167	166	166	166	167	168	171	176	167	168	169	173
25	175	178	184	171	175	177	179	182	188	183	181	182	183	186	193	186	185	184	188
30	192	194	202	188	189	193	195	197	206	202	198	199	201	204	211	207	202	201	205
35	210	213	222	206	206	210	213	215	221	220	213	215	218	219	226	223	214	216	221
40	225	228	237	220	218	225	227	229	233	237	227	227	229	230	238	239	226	227	232
45	235	238	249	236	230	235	237	239	243	255	236	235	237	238	245	252	234	235	240
50	243	245	257	251	238	241	243	245	248	268	243	240	242	243	249	260	239	239	244
55	247	249	263	259	243	245	247	248	251	275	248	242	245	245	251	265	242	241	246
60	249	251	265	263	245	246	247	247	250	278	250	242	244	244	250	267	241	241	245
65	247	249	265	263	245	243	245	244	247	278	249	239	241	242	247	266	239	237	241
70	243	245	261	259	241	238	241	240	242	275	246	235	237	237	242	263	235	233	237
75	238	240	256	256	239	234	236	236	238	273	242	231	233	233	238	260	231	229	233
80	234	236	252	252	235	230	232	231	233	270	239	226	228	228	233	256	228	225	229
85	230	232	248	247	233	226	229	228	232	271	240	226	228	228	234	258	229	226	230
90	231	233	248	249	235	227	230	229	233	273	241	227	228	229	234	259	230	227	230
95	231	233	248	249	235	227	230	229	233	274	240	226	227	228	233	257	228	225	229
100	230	231	246	246	232	225	228	227	230	272	238	224	225	225	231	254	225	222	226
105	226	228	242	243	228	222	224	223	226	268	233	220	220	220	226	249	220	217	221
110	221	223	237	237	222	217	218	217	220	261	226	214	213	213	220	242	213	211	214
115	214	215	229	230	213	210	210	210	212	251	217	206	205	205	211	232	204	202	205
120	204	206	220	220	203	201	201	200	202	237	205	196	194	195	200	220	193	191	194
125	193	195	208	208	190	189	189	188	190	219	192	184	182	182	187	206	179	178	182
130	180	182	194	193	175	176	175	174	176	200	175	170	168	168	173	189	164	163	167
135	164	166	178	175	157	160	159	159	160	176	156	152	151	151	156	168	146	146	149
140	146	149	159	153	137	141	141	140	142	151	134	131	131	131	135	144	124	124	128
145	125	127	135	130	115	117	118	118	119	125	113	107	106	106	110	120	102	100	102
150	98.5	101	110	107	93.0	93.0	92.8	91.8	93.1	95.8	89.2	82.8	82.0	81.3	85.8	92.1	77.7	77.1	78.8
155	75.9	77.6	86.3	80.1	66.4	67.4	66.0	66.2	67.6	71.2	66.2	61.6	61.1	60.6	65.3	67.3	57.8	58.0	58.4
160	51.7	53.5	59.0	45.1	36.2	37.1	34.4	38.0	43.6	44.7	42.6	40.1	39.6	39.3	42.3	41.1	36.1	35.9	35.9
165	23.2	24.2	26.8	23.3	22.7	25.6	26.3	22.3	17.6	26.1	21.0	22.1	20.2	19.4	21.3	20.1	17.5	17.6	17.5
170	10.6	10.2	9.22	13.9	12.9	12.7	11.8	11.3	11.0	9.84	3.70	7.82	7.47	6.82	6.59	6.22	5.68	5.62	5.30
175	2.38	1.65	1.40	1.53	1.74	2.07	2.17	2.26	2.04	1.90	1.55	1.10	0.59	0.50	0.49	0.47	0.40	0.35	0.19
180	0.00	0.00	0.00	0.00	0.00	0.00	0.00	0.00	0.00	0.00	0.00	0.00	0.00	0.00	0.00	0.00	0.00	0.00	0.00

C Range: 0 - 360DEG
 C Interval: 10.0DEG
 Test Speed: HIGH
 Temperature: 24.6DEG
 Operators:Alvin Zhang
 Test Date:2015-02-03

γ Range: 0 - 180DEG
 γ Interval: 1.0DEG
 Test System:EVERFINE GO-R5000_V2 SYSTEM V2.0.294
 Humidity: 45.4%
 Test Distance:2.462m [K=1.0000]
 Remarks:

LUMINOUS DISTRIBUTION INTENSITY DATA

Test:U:277.3V I:0.0829A P:21.33W PF:0.9280 Lamp Flux:2567.22x1 lm		
NAME: LED lamp	TYPE:LED	WEIGHT:0.3
SPEC.:E26/E27	DIM.: /	SERIAL No.:20#
MFR.: SHENZHEN IDO LIGHTING CO.,LTD	SUR.:	Shielding Angle:

Table--2

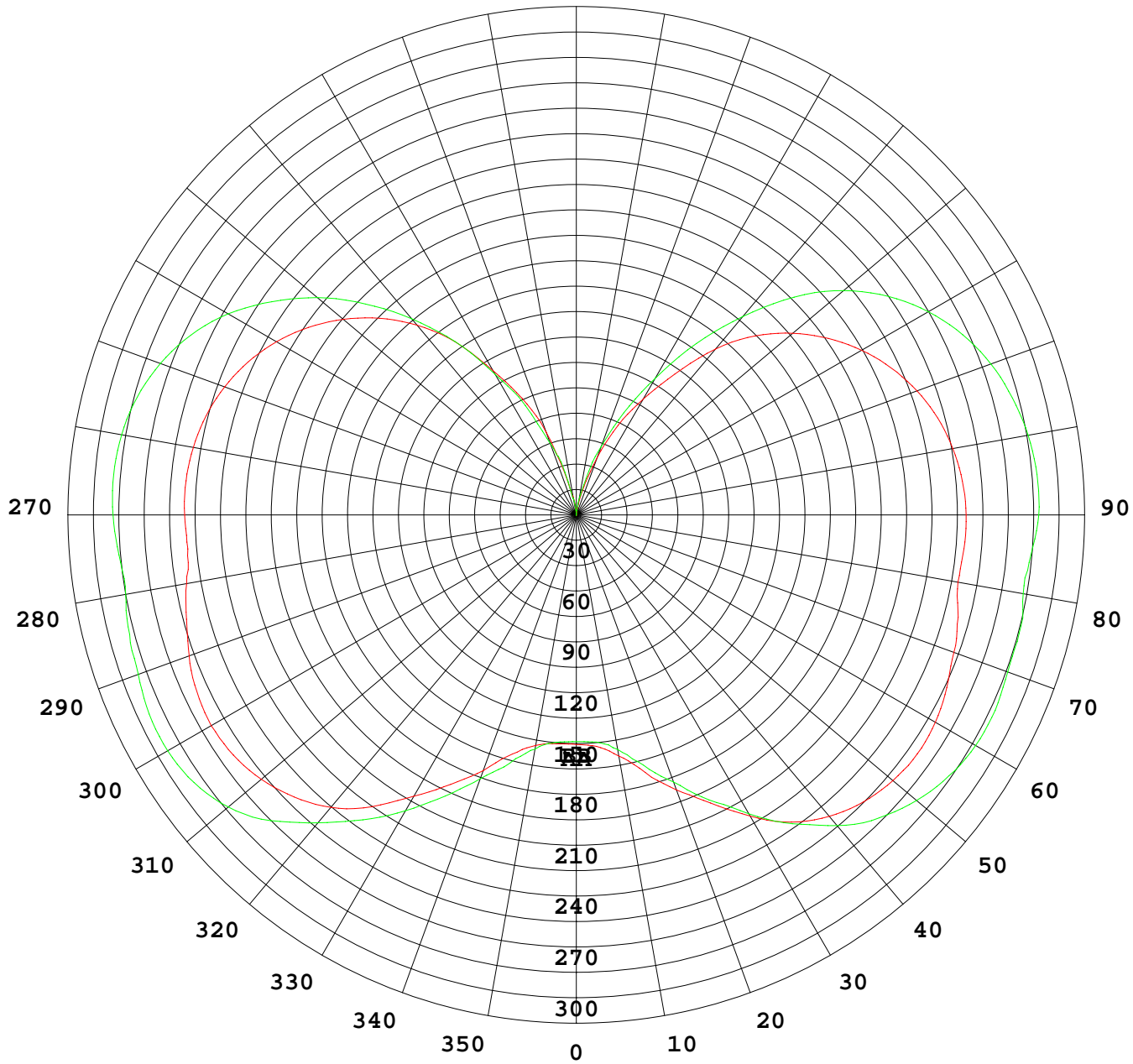
UNIT: cd

C(DEG) γ (DEG)	190	200	210	220	230	240	250	260	270	280	290	300	310	320	330	340	350			
0	135	135	135	135	134	134	134	134	134	134	134	134	134	133	133	133	133			
5	137	137	137	136	136	135	135	135	135	134	134	134	134	134	134	134	134	134		
10	145	144	144	143	142	141	140	140	141	139	138	138	137	137	137	136	136			
15	157	157	157	155	154	153	152	151	153	148	147	146	146	147	146	144	144			
20	173	173	174	170	169	168	167	169	168	162	160	161	161	163	160	157	157			
25	188	189	192	187	185	182	183	185	186	175	175	176	176	179	177	171	173			
30	205	206	211	204	201	200	199	202	204	190	190	192	193	196	195	187	188			
35	221	221	227	219	215	216	216	219	222	206	207	210	210	214	216	203	205			
40	232	233	240	235	228	228	228	233	239	218	221	223	224	229	231	216	220			
45	239	241	252	248	237	236	237	244	253	229	232	232	233	240	244	228	231			
50	244	246	259	258	242	242	243	252	262	236	239	239	240	249	253	236	238			
55	245	249	263	264	245	244	246	257	268	239	243	242	243	254	260	240	243			
60	244	248	264	266	244	245	246	259	272	239	244	243	244	257	264	243	245			
65	240	246	263	264	240	242	243	257	273	236	241	241	242	257	265	241	243			
70	236	242	261	261	237	238	239	254	271	232	238	237	238	254	264	238	239			
75	232	237	258	257	233	234	236	251	271	229	235	234	234	250	261	234	234			
80	228	233	254	250	227	228	230	246	268	223	229	227	228	246	257	229	229			
85	229	234	256	251	228	229	230	248	269	222	228	226	226	244	255	226	226			
90	229	235	256	250	228	231	231	250	273	224	229	227	227	245	257	227	227			
95	228	234	255	247	227	230	230	249	273	223	229	227	227	246	258	227	227			
100	225	230	251	243	224	227	227	246	271	220	227	225	226	244	256	225	226			
105	220	226	245	236	219	222	223	241	266	216	223	222	222	241	253	222	223			
110	213	219	237	228	212	216	217	233	260	210	218	216	217	235	247	216	217			
115	204	211	227	217	204	208	208	223	252	202	210	209	210	227	240	209	210			
120	194	200	214	205	194	197	198	210	240	192	200	199	200	216	229	199	201			
125	181	188	198	191	181	184	186	195	225	180	188	188	189	203	216	188	190			
130	167	172	180	173	166	170	172	179	206	166	174	174	176	187	201	174	176			
135	149	154	159	154	149	153	156	162	182	150	157	159	161	170	182	159	160			
140	128	131	135	131	128	133	138	141	153	131	138	140	144	151	159	140	142			
145	101	106	111	107	104	107	114	118	124	109	115	117	122	127	134	119	120			
150	79.3	82.6	85.8	83.0	81.9	84.3	89.9	93.8	93.1	85.7	90.4	92.2	98.2	103	106	95.1	95.6			
155	59.2	60.1	62.7	61.5	60.7	63.2	68.0	72.0	66.6	65.6	69.5	71.3	75.3	80.4	77.3	72.2	73.3			
160	36.5	37.3	38.6	38.0	38.8	41.7	46.1	47.7	42.8	45.2	48.3	49.8	52.3	57.4	44.3	45.4	48.8			
165	18.3	18.9	18.9	19.4	19.6	21.4	25.5	23.5	22.4	23.0	22.3	23.2	25.9	23.9	19.8	21.3	21.7			
170	5.07	5.88	5.57	6.41	6.54	7.78	8.87	8.13	9.00	9.79	11.1	10.6	9.85	12.4	12.1	11.5	11.4			
175	0.23	0.35	0.54	0.80	0.96	1.10	1.27	1.43	1.21	1.13	1.31	2.35	2.90	3.18	3.40	3.60	3.59			
180	0.00	0.00	0.00	0.00	0.00	0.00	0.00	0.00	0.00	0.00	0.00	0.00	0.00	0.00	0.00	0.00	0.00			

C Range: 0 - 360DEG
 C Interval: 10.0DEG
 Test Speed: HIGH
 Temperature: 24.6DEG
 Operators: Alvin Zhang
 Test Date: 2015-02-03

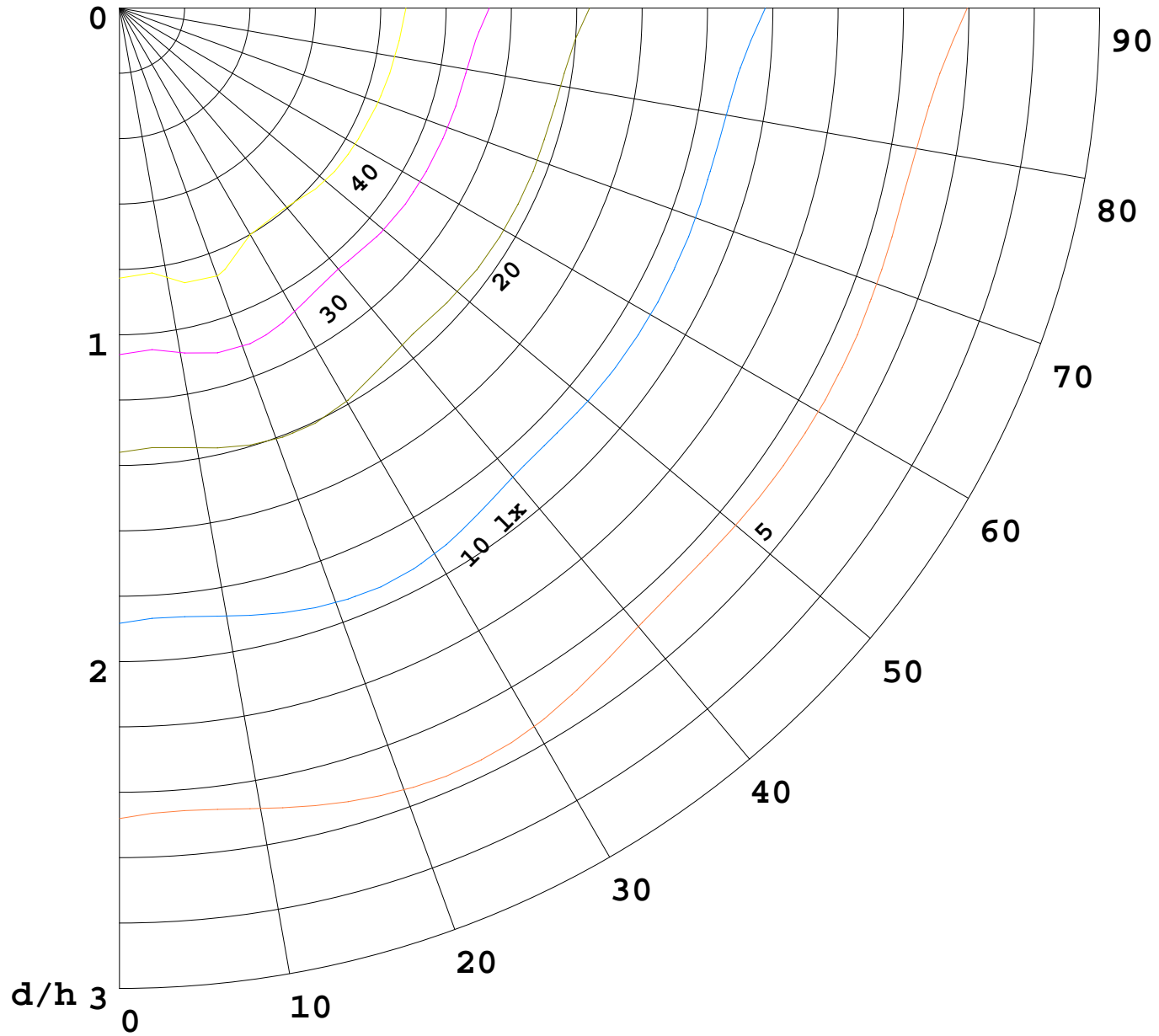
γ Range: 0 - 180DEG
 γ Interval: 1.0DEG
 Test System: EVERFINE GO-R5000_V2 SYSTEM V2.0.294
 Humidity: 45.4%
 Test Distance: 2.462m [K=1.0000]
 Remarks:

I (cd)



1000 lm

$\kappa = 1$



F = 1000 lm
K = 0.7
Hcc = 0.8 m
Hfc = 0.0 m
Eave = 100 lx

	Pcc	Pw	Pfc
—————	70	50	30
—————	50	30	20

